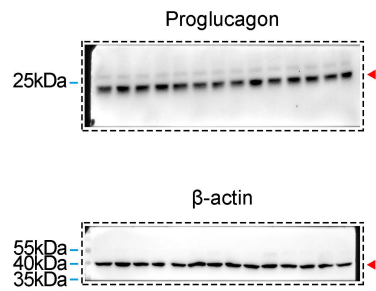


Figure 1—figure supplement 3D



**Figure 1, Figure supplement 3, Source Data 1.** Original membranes corresponding to Figure supplement 3. Under normal diet feeding, *Piezo1*<sup>loxp/loxp</sup> mice were used in lane 1, 2, 3, *Piezo1* IntL-CKO mice in lane 4, 5, 6, *Vil1*<sup>Flp</sup> mice in lane 7, 8, 9, *Gcg*<sup>cre</sup> mice in lane 10, 11, 12, and *Vil1*<sup>FLP::Gcg</sup><sup>flrCre</sup> mice in lane 13, 14.